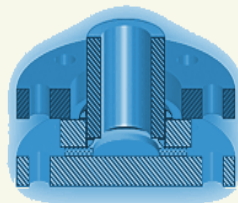


PC-Bolt – Calculation Procedures for multiple-bolted joints

All calculation procedures for multi-bolted joints support both designer and engineer in design and verifying of flange connections. In this process the load of the multi-bolted joint is been transferred into the load of a single-bolted joint or a chesse-hat screw joint by using structure-mechanical models, experimental proven results or parametric FEM studies in order to calculate on basis of VDI 2230.

Examples are available in each of the modules to become familiar with the software. These examples can be adapted to the wanted geometry or load easily. Dimension schemes of many head screws and stud bolts, nuts, washers and material schemes simplify the input of data. Non-standard bolts can be defined by using their length sections and diameter sections.

PC-Bolt was developed at the Institute for Engineering Design and Methodology at Technical University Berlin (Prof. Dr.-Ing. Lucienne Blessing). The models, their coding and the exp calculations depend on a couple of research wor continously since more than 30 years in the ins been used by many companies to design bolte different geometries and loads.



Modules within PC-Bolt

- Cylinder Joint
- Beam Joint
- Apparat Flange
- Rotation-Symmetric Multiple Joint
- Blind Flange
- Rectangular Flange
- Cantilever Flange



Further informations

TEDATA

TEDATA Ges. für technische
Informationssysteme mbH,
Königsallee 45, D-44789 Bochum
Phone +49(0)234 307030
sales@tedata.com
www.tedata.com